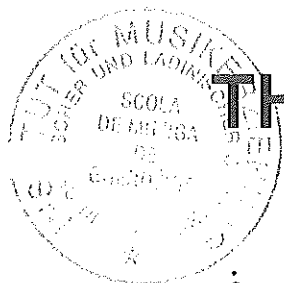


Part 4 C



THE SECOND WALTZ

Dimitri Shostakovich
Bearbeitung: André Waignein

from Jazz Suite No. 2

FAGOTT I

mf *pp*

6

13

20

27

mf

34

f

41

mf

48

THE SECOND WALTZ

55

f

62

mf

69

76

f

83

90

Poco rit. *A tempo*

f

97

104

Poco rit.

f

THE SECOND WALTZ

141 *A tempo*

148

225

2

9 *Poco rit.* *A tempo* 4

8 *mf*

3

0

THE SECOND WALTZ

167

Musical staff (bass clef) showing measures 167-173. Measure 167 has a quarter note G2. Measures 168-170 have quarter notes G2, A2, B2, and G2, all tied with a slur. Measure 171 has a dotted quarter note G2, followed by quarter notes G2, A2, and B2. Measures 172-173 have dotted quarter notes G2, A2, and B2. Dynamic marking *p* is below measure 171.

174

Musical staff (bass clef) showing measures 174-180. Measures 174-179 have quarter notes G2, A2, B2, and G2, each pair of notes separated by a beam with a slur over the pair. Measure 180 has quarter notes G2, A2, and B2. Dynamic marking *p* is below measure 174.

181

Musical staff (bass clef) showing measures 181-187. Measures 181-183 have quarter notes G2, A2, and B2, each pair of notes separated by a beam with a slur over the pair. Measure 184 has a half note G2. Measures 185-187 have quarter notes G2, A2, and B2, each pair of notes separated by a beam with a slur over the pair. Tempo markings *Poco rit.* and *A tempo* are above measures 181 and 184. Dynamic marking *f* is below measure 185.

188

Musical staff (bass clef) showing measures 188-194. Measures 188-193 have quarter notes G2, A2, B2, and G2, each pair of notes separated by a beam with a slur over the pair. Measure 194 has quarter notes G2, A2, and B2. Dynamic marking *f* is below measure 188.

195

Musical staff (bass clef) showing measures 195-201. Measures 195-199 have quarter notes G2, A2, B2, and G2, each pair of notes separated by a beam with a slur over the pair. Measure 200 has a dotted quarter note G2, followed by quarter notes G2, A2, and B2. Measure 201 has a dotted quarter note G2, followed by quarter notes G2, A2, and B2. Dynamic marking *ff* is below measure 195.

202

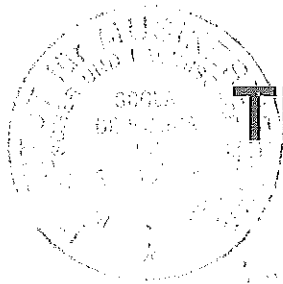
Musical staff (bass clef) showing measures 202-207. Measures 202-206 have quarter notes G2, A2, B2, and G2, all tied with a slur. Measure 207 has a dotted quarter note G2, followed by quarter notes G2, A2, and B2. Dynamic marking *mf* is below measure 202.

208

Musical staff (bass clef) showing measures 208-213. Measures 208-212 have quarter notes G2, A2, B2, and G2, each pair of notes separated by a beam with a slur over the pair. Measure 213 has quarter notes G2, A2, and B2. Dynamic marking *f* is below measure 208.

214

Musical staff (bass clef) showing measures 214-219. Measures 214-218 have quarter notes G2, A2, B2, and G2, each pair of notes separated by a beam with a slur over the pair. Measure 219 has quarter notes G2, A2, and B2. Dynamic marking *ff* is below measure 214.



THE SECOND WALTZ

Dimitri Shostakovich
Bearbeitung: André Waignein

from Jazz Suite No. 2 II FAGOTT + KONTRA

mf *pp*

6

13

20

27

p

34

f

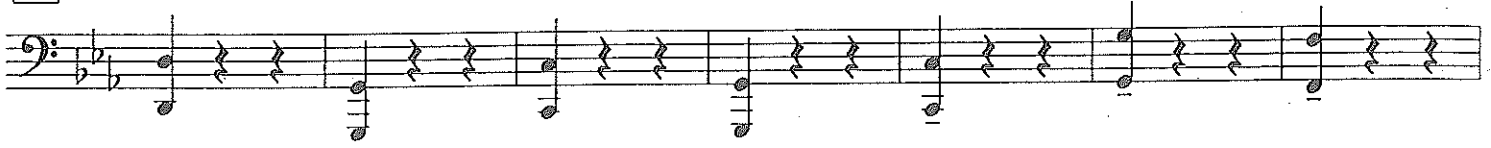
41

mf

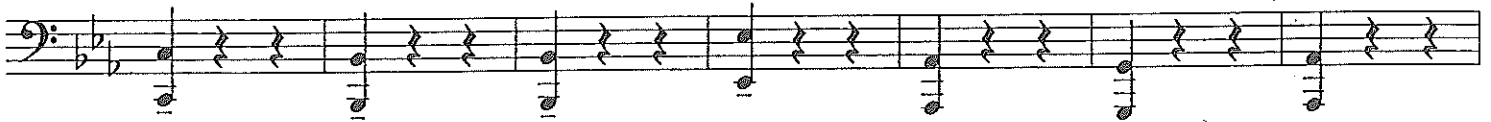
48

THE SECOND WALTZ

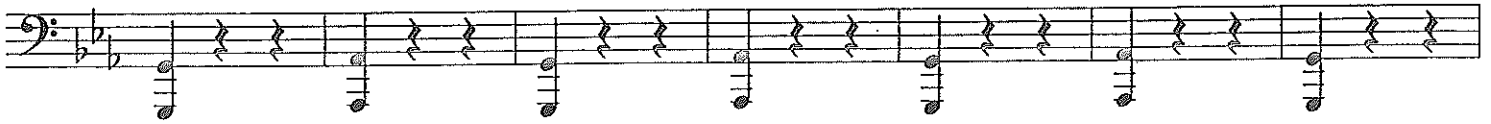
55



62



69



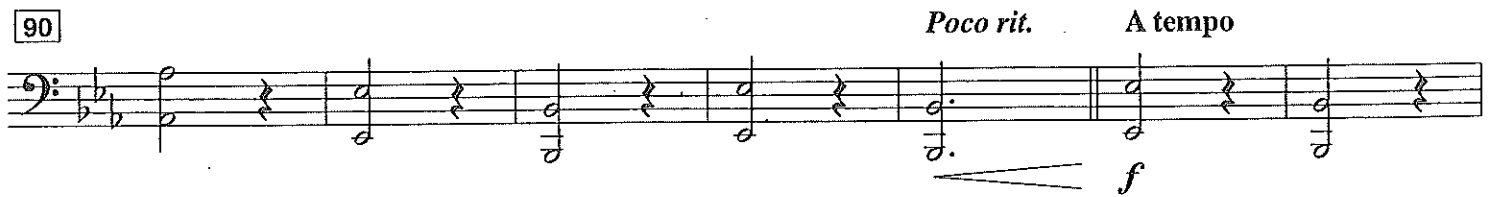
76



83



90



97



104



THE SECOND WALTZ

111 A tempo



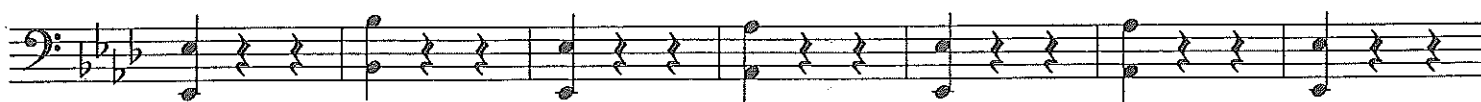
118



125



132

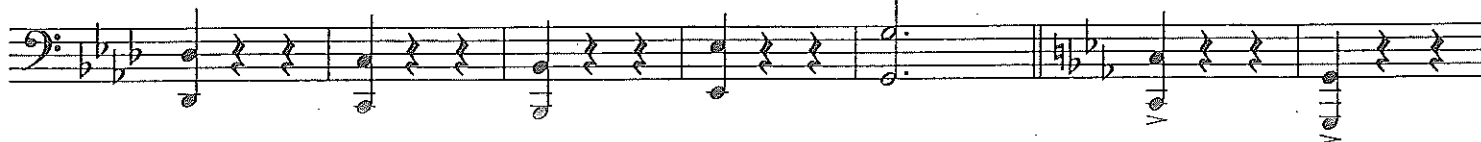


139

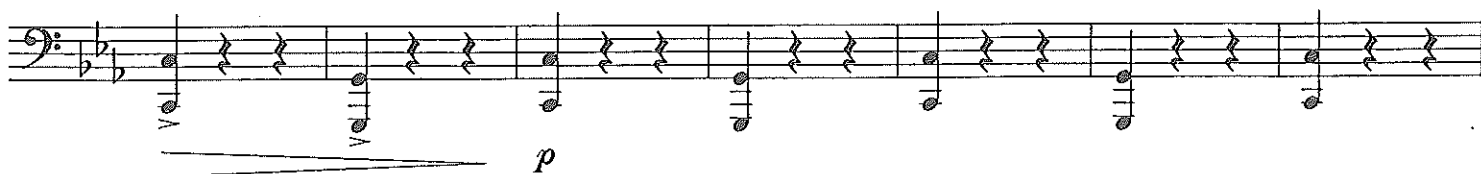
Poco rit.



A tempo



146



153



160



THE SECOND WALTZ

167

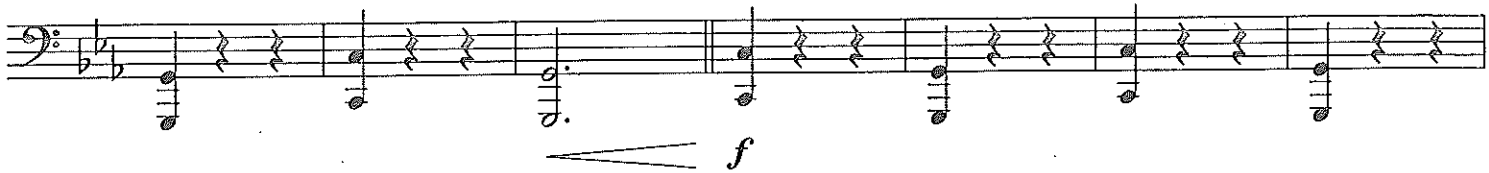


174

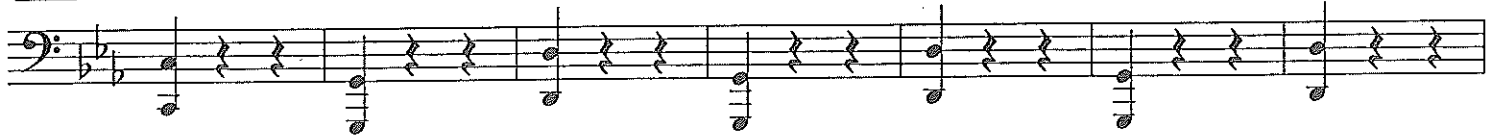


181

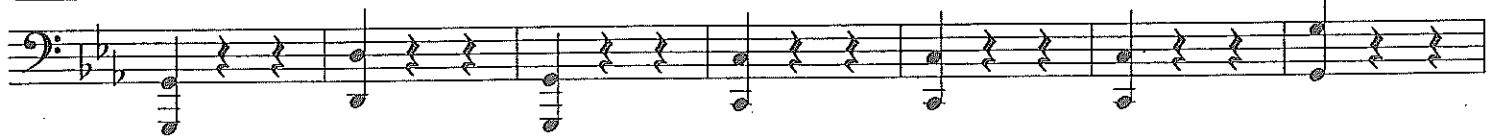
Poco rit. **A tempo**



188



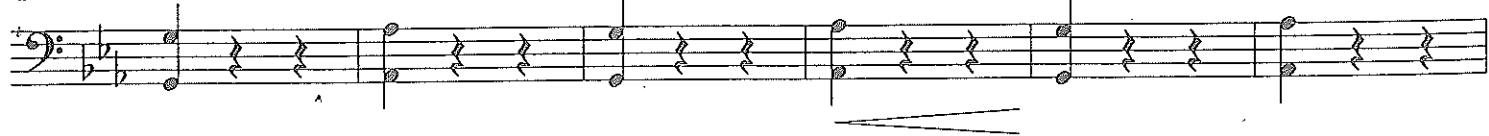
195



202



208



214

